



ČEZNET

Benefit of telematic & ICT for production, transmission, distribution and consumption of electrical energy

ČEZnet, a. s.

Petr Šprync

petr.sprync@cez.cz



ČEZnet, a.s. ICT provider

- **ČEZnet is 100% owned by ČEZ, a. s.**
- **Established 14th Nov 2001 for the purpose of providing complete electronic communication services in the fields of telecommunication and data services for the whole Czech Republic**
- **ČEZnet, a.s. is a system integrator in the following fields:**
 - Data
 - Voice
 - Customer care centre
 - DWDM, PDH, SDH, Radio
- **Since 2005 has provided telecommunication services for foreign acquisitions**



Effective Service Delivery

- **The network is critical to meeting business needs.**
 - **Need to drive business innovation by adopting new technology and business strategies to expand your opportunities.**
 - **Companies that combined sophisticated network infrastructures with network-based business applications reduced their annual operating costs by more than 20 percent. In addition, these companies measured a 20 to 25 percent increase in customer satisfaction.**
-
- **Operational Excellence**
 - **Customer Experience**
 - **Business Innovation**



Effective Service Delivery - MPLS

- **ČEZnet uses the MPLS network as a multiservice platform**
- **MPLS meets business needs**
- **Secure and reliable**
- **Universal platform for network applications**
 - Data VPN service
 - IP telephony
 - Video Surveillance
 - System for remote data reading from electrometers



Wi-Fi solution in energy

- **Improve the efficiency of employees and enhance the experiences of customers and partners**
- **Collaborate in real-time using your choice of tools: application access, voice, video, instant messaging, or e-mail**
- **Track assets in real time (for example, its radio frequency ID [RFID])**

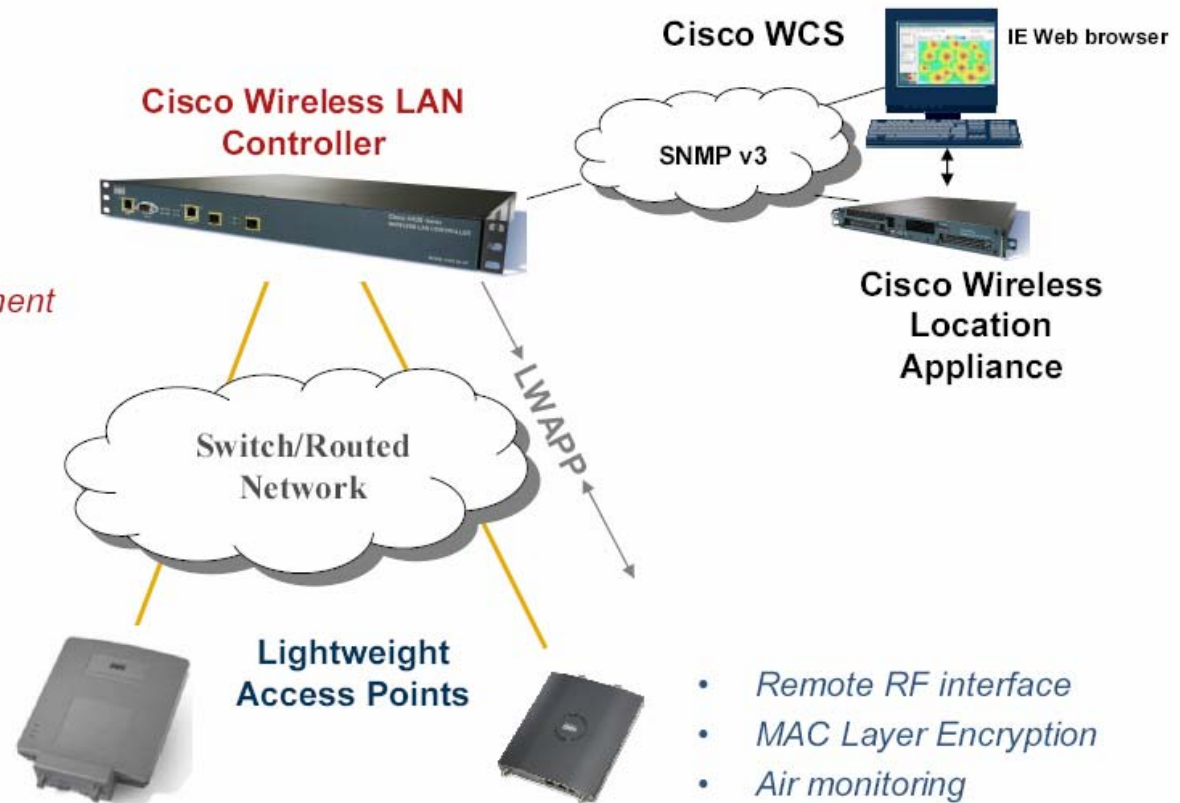
The data collected on the mobile asset may include its identification information

- **the date and the time of the day, its physical location, the surrounding temperature, humidity, or pressure, if the asset is in motion or not**



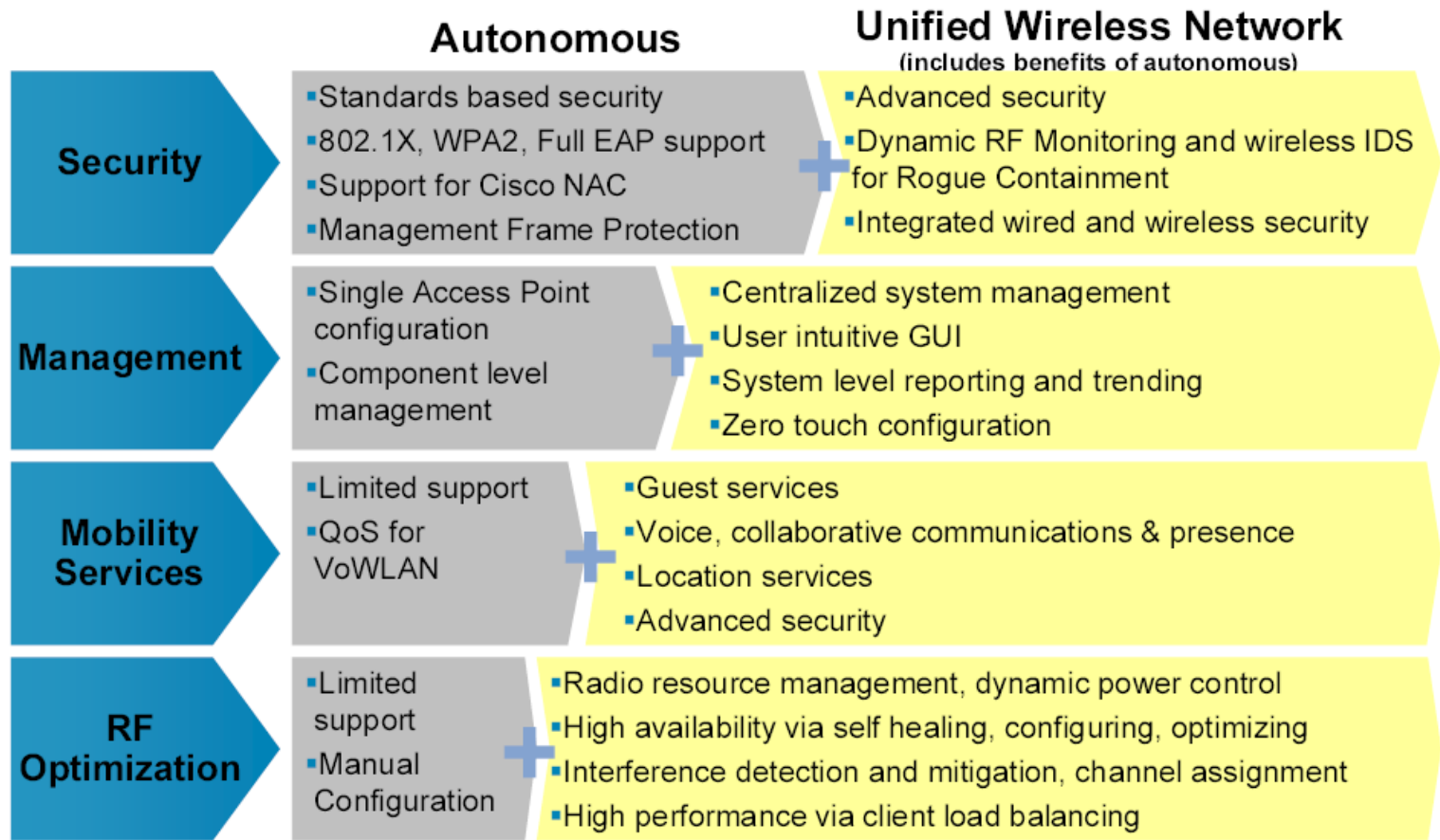
Wi-Fi Architecture

- *Security Policies*
- *QoS Policies*
- *RF Management*
- *Mobility Management*





Added Value of centralized solution





Unified Communications – uses and benefits

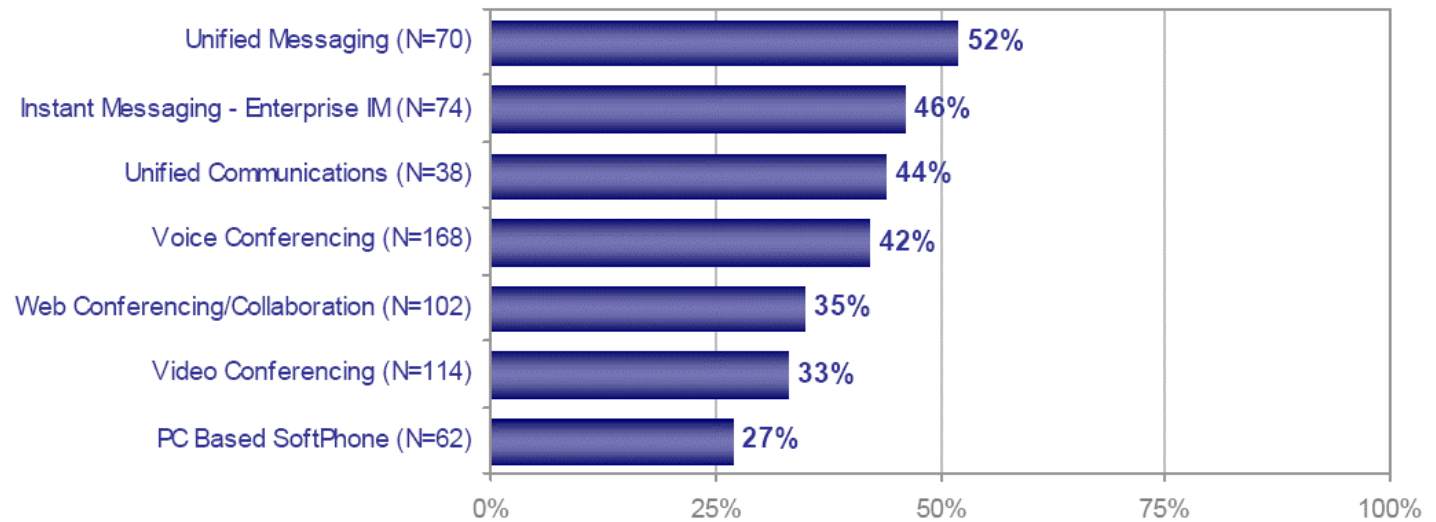
Main benefits from implementation of IP telephony

- **Mobility:** Get a unified view of calls, calendars, data, and e-mail everywhere, every time and everyone's included.
- **Collaboration:** Share all types of media with voice, Web, or videoconferencing participants.
- **Customer Service:** Integration with applications maximizes call center performance and customer satisfaction.
- **In maximum rate use MPLS infrastructure. Share convergent sources**



Unified Communications

- **Energy must react on the new applications and on the new style of communications**
- ***Employee Collaboration – increase their productivity***
- ***Cost savings***



Sage Research, Inc.

% of respondents



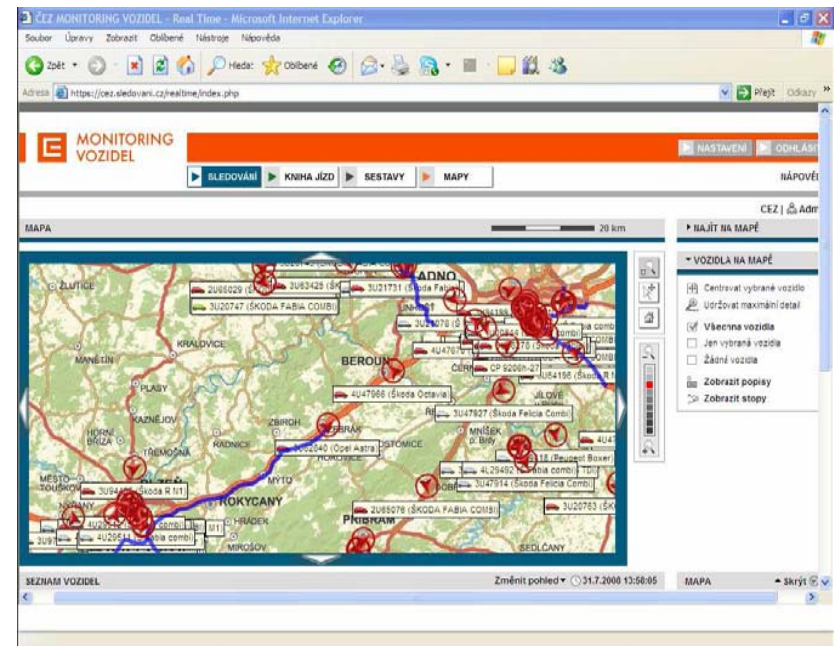
Unified Communications in the energy market

- **2004 first power station converted to IP telephony**
- **Progressive process of implementation within:**
 - Regional small PBX
 - Power stations
 - Administrative buildings
- **Centralized regional call processing solution**
- **10 000 IP telephones in the network**
- **Cooperation between foreign acquisitions on the design of global voice network (Bulgaria, Romania, Poland)**



GPS – vehicle location

- **Main reason to implement GPS system**
 - Vehicle location management for ČEZ Distribution
 - Management and navigation of service units for ČEZ Distribution
 - Optimum utilization of service units
 - Decreases operational cost of all cars in ČEZ





GPS advantages and disadvantages

■ advantages

- Obvious operational cost savings for the ČEZ auto fleet
- Discipline and effectiveness in the use of ČEZ auto fleet
- Flexible solution
- Centralized solution
- Service available abroad

■ disadvantages

- High initial investment
- Monitoring unpopular among users
- Dependent on functional mobil operator



GPS expected cost savings

- **Ensures only authorized km use 30%**
- **Fuel savings 30%**
- **Minimizes needed staff (vehicle management)**
- **Decreases number of needed vehicles**
- **Automatic vehicle data transfer to the IS**

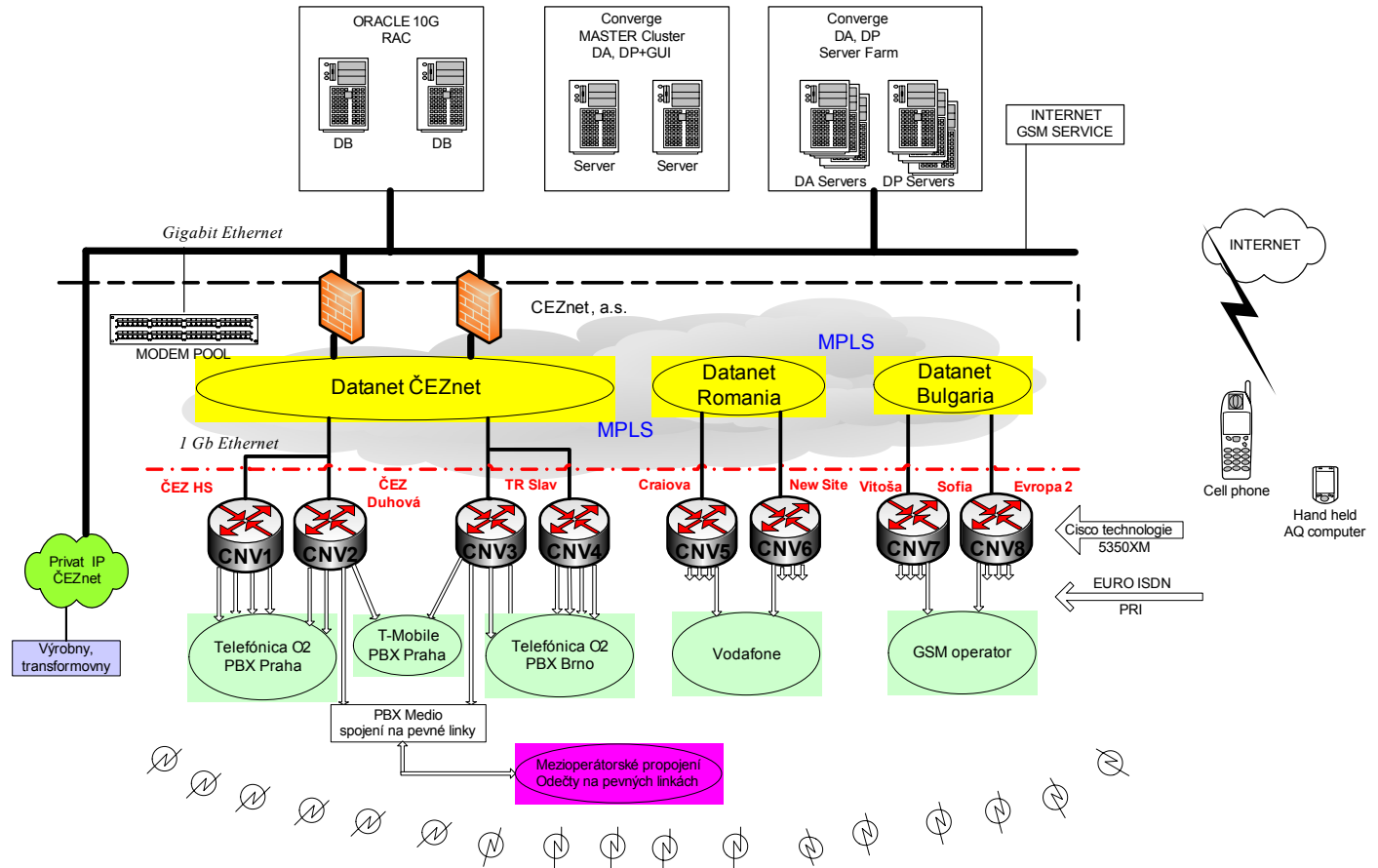


Converge

- **System Converge** use for remote data reading from electrometers
- **Centralized application with hierarchic model**
- **Extensible for foreign acquisitions**
- **Consolidated solution MDW Converge is integrated with the business applications for data processing**
 - **ERP systems**
- **Daily read 20000 devices**



Converge – application design





END